

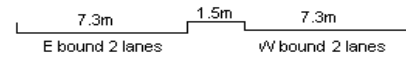
YEAR 2016

COVERAGE (B) STATION 6221

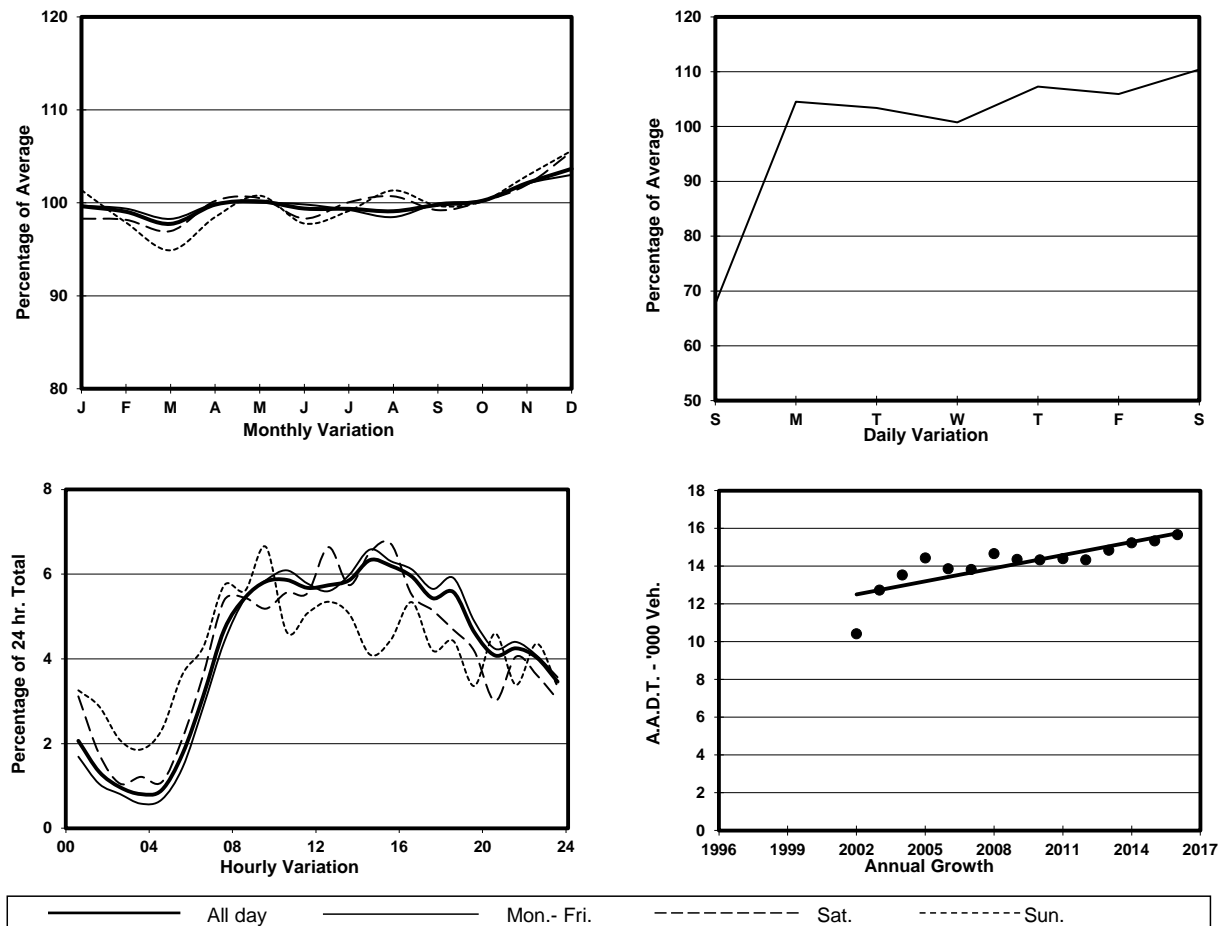
ROAD NETWORK MAJOR

ROAD TYPE DISTRICT DISTRIBUTOR

LINK TSING YI N COASTAL RD FO (from TSING TSUEN RD to TAM KON SHAN INT W END)



1. TRAFFIC FLOW VARIATION AND GROWTH



2. TRAFFIC CHARACTERISTICS (BY DIRECTION)

Parameter	All - Day	Mon. - Fri.	Sat.	Sun.
EAST BOUND				
A.A.D.T.	6340	6780	7050	4190
R 12 / 24 - %	68.3	69.7	67.1	59.1
R 16 / 24 - %	85.4	87.5	82.1	74
AM Peak Hour	0900-1000	0900-1000	0800-0900	0800-0900
One-way flow at AM peak hour	330	350	360	250
T - % (AM)	-	29.6	-	-
PM Peak Hour	1600-1700	1600-1700	1600-1700	1600-1700
One-way flow at PM peak hour	420	450	420	280
T - % (PM)	-	27.2	-	-
Prop.of commercial vehicles - 16 hr.	-	28.8	-	-
WEST BOUND				
A.A.D.T.	9330	9860	10570	6580
R 12 / 24 - %	68.8	69.7	68.8	61.6
R 16 / 24 - %	85.7	87.2	83.5	77.8
AM Peak Hour	0900-1000	0900-1000	0700-0800	0900-1000
One-way flow at AM peak hour	580	620	680	470
T - % (AM)	-	23.1	-	-
PM Peak Hour	1600-1700	1600-1700	1600-1700	1600-1700
One-way flow at PM peak hour	520	570	560	290
T - % (PM)	-	26.7	-	-
Prop.of commercial vehicles - 16 hr.	-	28.3	-	-

3. OTHER INFORMATION AND COMMENT

4. Vehicle classification and occupancy - Monday to Friday

Time		Class of vehicle									
		Motor	Private	Taxi	Private	PLB	Goods veh.		Non	Fr. Bus	
		Cycle	Car		LB		Light	M & H	Fr. Bus	SD	DD
0700-0800	Pro	2.4	35.7	19.2	0.4	0.0	13.3	16.5	10.2	0.0	2.3
	Ocp	1.0	1.7	1.8	3.0	0.0	1.9	1.1	25.8	0.0	46.6
0800-0900	Pro	1.9	33.9	15.3	0.0	0.0	21.0	19.4	6.1	0.0	2.4
	Ocp	1.0	1.6	2.1	0.0	0.0	1.6	1.2	26.4	0.0	46.9
0900-1000	Pro	1.3	30.5	13.9	0.0	0.0	28.3	20.0	3.1	0.0	2.8
	Ocp	1.0	1.5	2.2	0.0	0.0	1.6	1.2	24.4	0.0	21.9
1000-1100	Pro	0.0	27.4	9.3	1.0	0.0	28.9	25.0	5.4	0.0	3.1
	Ocp	0.0	1.7	2.4	2.0	0.0	1.3	1.2	8.5	0.0	15.2
1100-1200	Pro	2.0	32.5	12.5	0.0	0.0	26.5	19.0	4.5	0.0	2.9
	Ocp	1.3	1.7	1.7	0.0	0.0	1.4	1.3	13.8	0.0	19.7
1200-1300	Pro	2.4	19.4	17.5	0.5	0.0	30.7	23.6	3.3	0.0	2.7
	Ocp	1.0	1.5	2.2	3.0	0.0	1.4	1.2	15.9	0.0	23.4
1300-1400	Pro	1.4	26.1	11.9	0.0	0.0	29.9	25.2	2.9	0.0	2.6
	Ocp	1.3	1.5	2.4	0.0	0.0	1.6	1.4	12.8	0.0	24.5
1400-1500 Peak hour	Pro	1.4	27.2	15.3	0.5	0.0	31.1	18.2	3.3	0.0	3.0
	Ocp	1.0	1.6	2.0	4.0	0.0	1.6	1.5	6.9	0.0	21.2
1500-1600	Pro	1.5	27.9	15.2	1.0	0.0	28.4	20.3	2.5	0.0	3.0
	Ocp	1.0	1.5	1.7	3.0	0.0	1.5	1.3	8.6	0.0	23.0
1600-1700	Pro	1.6	26.4	12.9	2.6	0.0	29.5	19.7	4.1	0.0	3.2
	Ocp	1.3	1.7	2.1	4.6	0.0	1.7	1.2	17.5	0.0	30.2
1700-1800	Pro	2.1	35.7	17.0	0.4	0.0	17.4	18.3	6.6	0.0	2.5
	Ocp	1.0	1.5	1.8	1.0	0.0	1.8	1.2	14.8	0.0	43.1
1800-1900	Pro	2.1	36.1	13.6	0.4	0.0	20.4	19.1	5.5	0.0	2.8
	Ocp	1.0	1.6	2.5	9.0	0.0	1.4	1.4	24.1	0.0	50.9
1900-2000	Pro	0.0	34.4	19.8	0.0	0.0	18.1	17.7	7.3	0.0	2.7
	Ocp	0.0	1.6	1.9	0.0	0.0	1.4	1.3	18.7	0.0	39.1
2000-2100	Pro	0.0	28.7	23.5	0.0	0.0	13.6	25.0	5.7	0.0	3.5
	Ocp	0.0	1.4	1.6	0.0	0.0	1.4	1.2	17.3	0.0	26.3
2100-2200	Pro	0.7	26.3	25.0	0.0	0.0	10.8	27.0	6.1	0.0	4.2
	Ocp	1.0	1.7	2.3	0.0	0.0	1.5	1.3	18.0	0.0	27.8
2200-2300	Pro	2.5	33.2	29.5	0.0	0.0	10.4	18.4	2.5	0.0	3.5
	Ocp	1.0	1.5	2.2	0.0	0.0	1.3	1.1	15.0	0.0	26.1
16 hours	Pro	1.5	30.4	16.6	0.4	0.0	22.5	20.5	5.1	0.0	2.9
	Ocp	1.1	1.6	2.0	3.8	0.0	1.5	1.3	18.5	0.0	30.4

Legend

Pro. Proportion of vehicles in % (Sum may not add up to 100% due to figure rounding)*

Ocp. Average occupancy of vehicles including both driver and passengers*

M&H Medium and Heavy

* All traffic data are collected from combined bounds except for one way traffic